



National Environmental
Research Program

TROPICAL ECOSYSTEMS *hub*

Governance, Planning and Effective Adaptation of Ecosystem Service Markets to Climate Adaptation and Landscape Resilience

THE CAIRNS INSTITUTE
A brighter future for people in the tropics

Allan Dale
The Cairns Institute



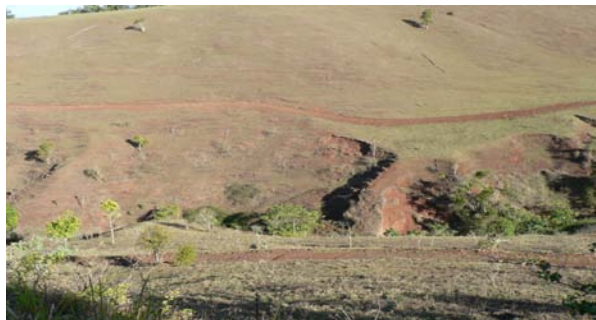


REMINDER - INTERNATIONAL / NATIONAL CONTEXT

- New chances to use regionally-prioritised management practices to deliver abatement/biosequestration.
- Australia's Carbon Farming Initiative now delivers the framework for this and could bring benefit to FNQ regions.
- The NRM planning foundations and overall governance arrangements are critical to securing success.
- Now need to actively determine the best NRM governance and planning arrangements to guide the market and to deliver broader climate change adaptation.



IN SHORT



NEXT GENERATION
NRM PLANS



STRONG GOVERNANCE
SYSTEM FOR REGIONAL
AGGREGATION



CFI
METHODS
AND
PROJECTS



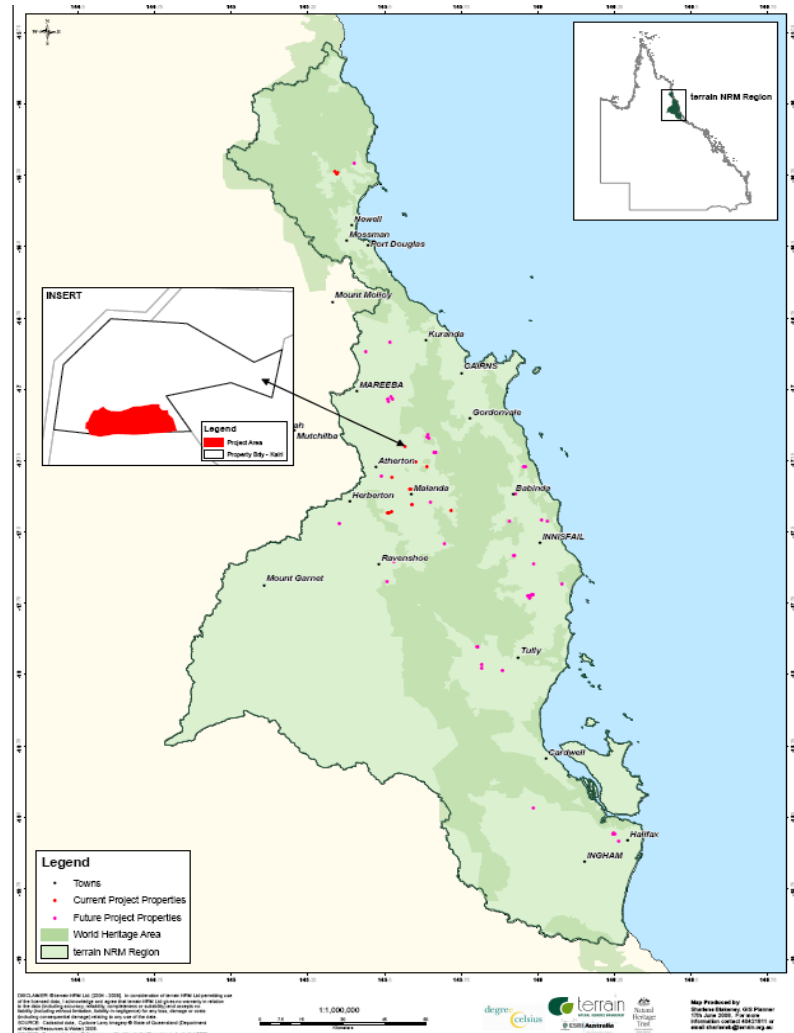


EFFORTS START AT THE LOCAL SCALE





LOCAL EFFORTS COULD DELIVER REGIONAL OUTCOMES



Publication

Status

An Australian landscape-based approach: AFOLU mitigation for smallholders. van Oosterzee, P., Preece, N. & Dale, A.

In Wollenberg E, Nihart A, Tapio-Biström M-L, Grieg-Gran M (eds). (2012). *Climate Change, Mitigation and Agriculture*. Earthscan, London

Integrating agriculture and climate change mitigation at landscape scale: Implications from an Australian case study. Allan Dale, Penny van Oosterzee, and Noel Preece

Invited to submitted to a special edition of *Global Environmental Change*.

Integrated natural resource governance: Regional progress and potential national reforms. *Allan Dale, Sarah Ryan and Kathleen Broderick*

Invited to submit/accepted to a national edited book on multi-level governance systems.

Carbon, Biodiversity and Regional Natural Resource Planning: Towards High Impact Next Generation Plans in Australia. Allan Dale, James McKee & Karen Vella

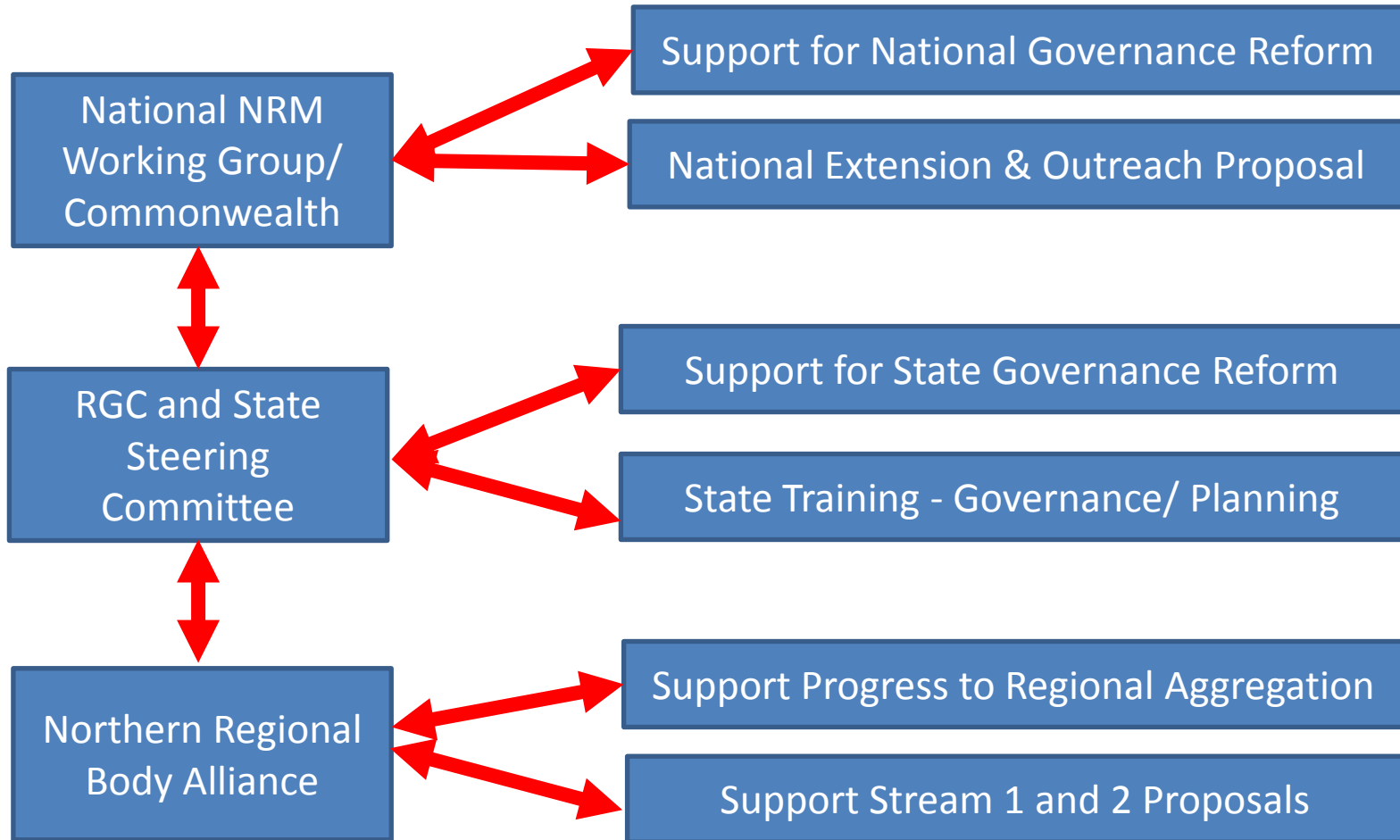
Australian Planner.

A Governance Analysis of Australia's System of Greenhouse Gas Abatement Through Landscape-Scale NRM. Allan Dale, Karen Vella and James McKee

Aiming for *Australian Journal of Environmental Management*



Pathways to Delivery:



THANK YOU



National Environmental
Research Program

CONTACT

Name: Associate Professor Allan Dale
Organisation: James Cook University, Cairns
Phone: 0418 736 422
Email: allan.dale@jcu.edu.au