



## Development of a long-term social and economic monitoring programme (SELTMP)

Petina L. Pert<sup>1,3</sup>, Erin Bohensky<sup>2</sup>, Matt Curnock<sup>2</sup>, Jeremy Goldberg<sup>2,5</sup>, Margaret Gooch<sup>4</sup>, Nadine Marshall<sup>2</sup>, Samantha Stone-Jovicich<sup>2</sup> and Renae Tobin<sup>5</sup>

<sup>1</sup>CSIRO Ecosystem Sciences, PO Box 12139 Earlville BC, Cairns, Queensland, 4870

<sup>2</sup>CSIRO Ecosystem Sciences, ATSIP, Townsville

<sup>3</sup>James Cook University, School of Earth and Environmental Sciences, Cairns Campus – Adjunct Research Fellow

<sup>4</sup>Great Barrier Reef Marine Park Authority (GBRMPA), Townsville

<sup>5</sup>James Cook University, School of Earth and Environmental Sciences, Townsville Campus

### AIMS:

- 1) To support Reef managers, industries, and communities visualise the social, cultural and economic dimensions of the Great Barrier Reef (GBR) and how these change over time;
- 2) To understand and monitor how people use and benefit from the GBR; and
- 3) To report on the annual status and trends of selected social, cultural and economic indicators identified by stakeholders.

### METHODS:

Researchers from CSIRO and James Cook University, in partnership with GBR stakeholders are developing a long-term social and economic monitoring programme (SELTMP). Overseen by a Steering Committee and a Scientific Advisory Panel, researchers in the first year have collated secondary datasets and identified data gaps. During 2013, primary survey will be collated to fill these gaps. Research and development of indicators has been underpinned by a scientific framework that describes the relationships between society (represented by the 7 stakeholder groups), drivers of change, and the GBR ecosystem, adapted from the Millennium Ecosystem Assessment framework (MEA, 2003) – Figures 1 and 2.

### RESULTS (to date)

A prototype “SELTMP 2011” – a 400 page comprehensive document was produced from existing secondary datasets (both spatial and spatial).

A geodatabase and metadata catalogue describing relevant datasets.

A comprehensive systematic mapping review of other established monitoring programmes from around the world (Pert et al. in prep).



Figure 1. Diagram depicting the governance structure of SELTMP



Traditional Owners

Commercial Fisheries & Aquaculture

Ports & Shipping

Catchments & Industry

Coastal communities

Recreation

Tourism

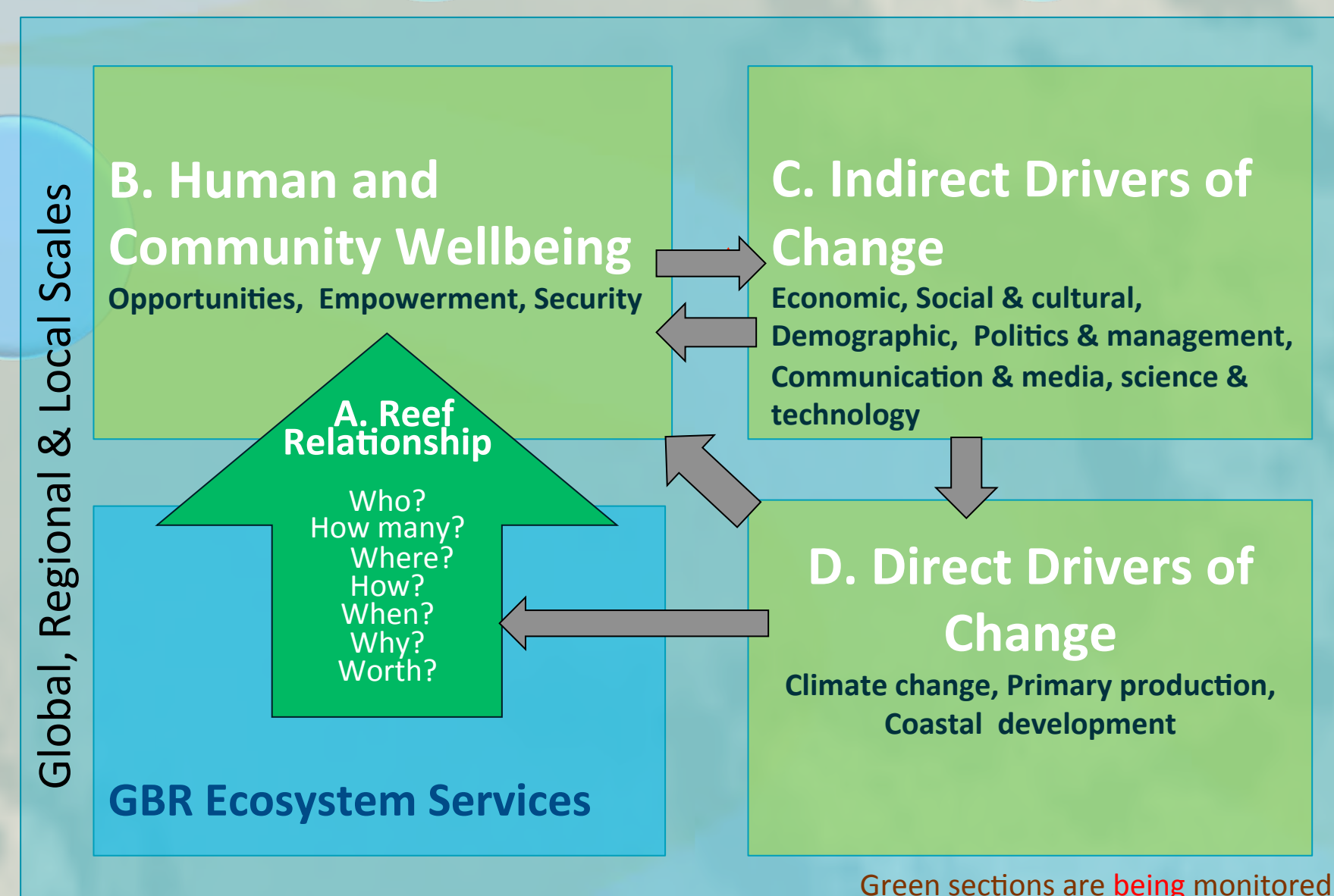
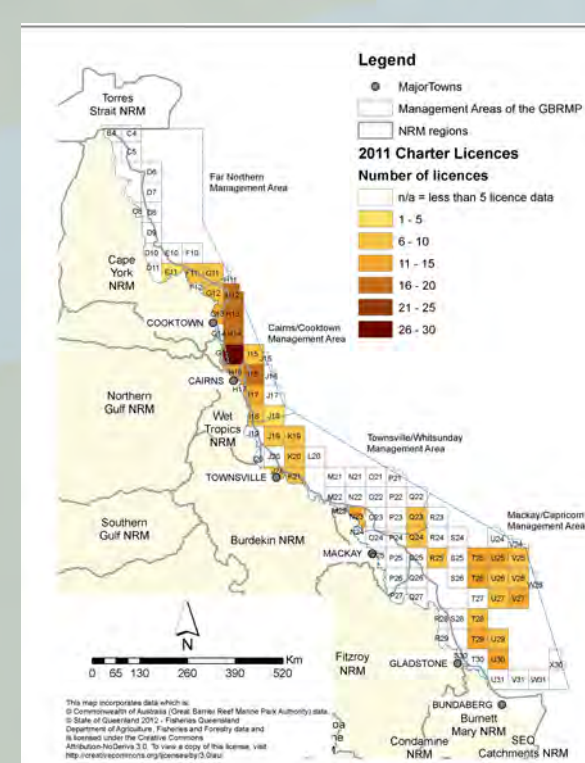
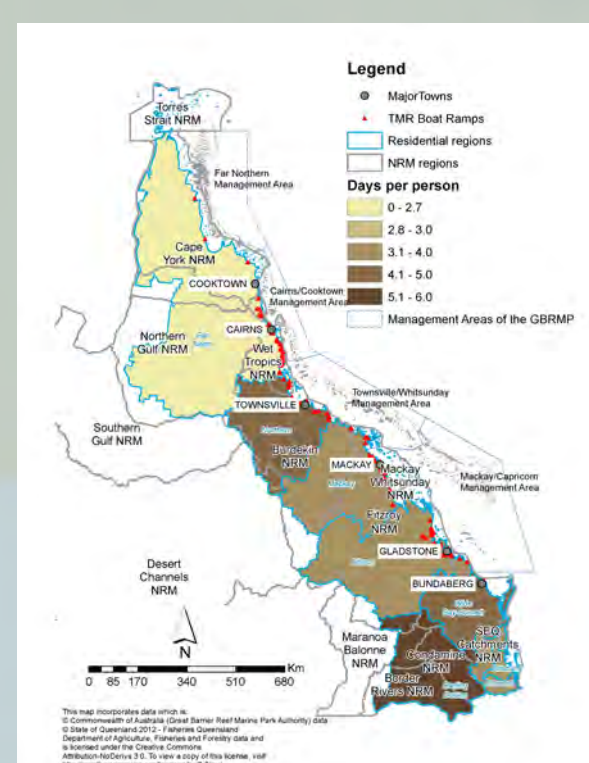
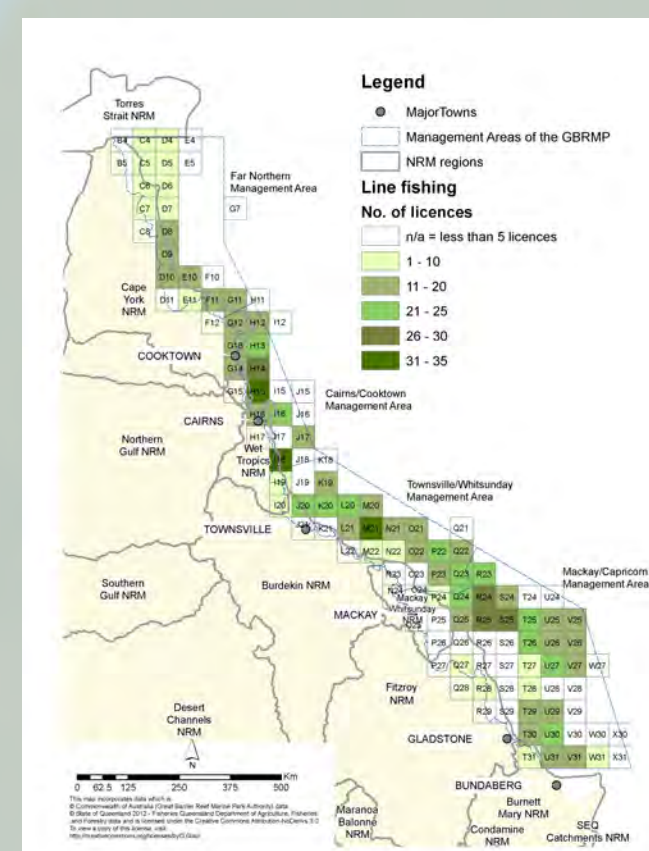


Figure 2. SELTMP scientific framework adapted from the Millennium Ecosystem Assessment (MEA 2003)

### Great Barrier Reef Marine Park – Tourists (Jan-Jun 2011)

Visitor Numbers	Jan-11	Feb-11	Mar-11	Apr-11	May-11	Jun-11
Far Northern MA	89	110	2 996	483	331	329
Cairns/Cooktown MA	80 089	61 153	65 488	73 005	65 116	68 411
Cairns POM	77 796	59 731	63 941	71 713	63 555	66 616
Townsville/Whitsunday MA	59 855	38 938	59 605	58 112	53 339	45 178
Whitsunday POM	53 057	35 303	54 465	51 660	47 858	39 907
Mackay/Capricorn MA	8 737	6 673	7 609	11 030	10 376	8 062

Find this project at <http://www.nerptropical.edu.au>  
Theme3: Managing for Resilient Tropical Systems  
Program 10: Socio-economic value of GBR goods and services; Project 10.1

For more information, please contact Dr Nadine Marshall (CSIRO): [nadine.marshall@csiro.au](mailto:nadine.marshall@csiro.au)

